

## Maiden JORC Mineral Resource at Big Hill Exceeds Expectations by 80%

- ❑ Significant near-surface Tungsten Resource defined at Big Hill Tungsten Deposit
- ❑ 1.6 million metric tonne units of Tungsten at 0.1% tungsten trioxide (WO<sub>3</sub>) cut-off grade; which is more than 80% greater in size than the initial conceptual target.
- ❑ A significant proportion is Measured and Indicated Resource which is near-surface, higher in grade and ideal mill feed. This is one of the largest currently reported Measured Resources of any Tungsten deposit in Australia.
- ❑ A lower grade Resource estimate containing 2.5 million metric tonne units of tungsten at 0.05% tungsten trioxide cut-off; this low grade material has been shown to be amenable to X-ray sorting, providing a potential bulk mining scenario.
- ❑ Only one third of the strike length of Big Hill has been drilled for Resources.
- ❑ 70% of the Resource is within 100 metres of surface and remains open in all directions.
- ❑ A Preliminary Operating Cost estimate is being developed; feasibility study activities are progressing.
- ❑ Tungsten Concentrate Price showing strength, up 4% in the past week.

The directors of Hazelwood Resources Ltd are pleased to announce a significant maiden Mineral Resource estimate for the Big Hill Tungsten Deposit. At a cut-off grade of 0.1% WO<sub>3</sub>, a total Mineral Resource of **8.97 million tonnes @ 0.17% WO<sub>3</sub> for approximately 1.6 million metric tonne units** (mtu) contained Tungsten is reported. Applying a lower cut-off grade of 0.05% WO<sub>3</sub>, a low grade Mineral Resource containing approximately **2.5 million mtu of Tungsten** is reported.

0.1% cut-off	Mt	% WO3	mtu
<b>Measured</b>	1.56	0.20	319,260
<b>Indicated</b>	1.32	0.19	254,567
<b>Inferred</b>	6.09	0.16	980,812
<b>Total</b>	8.97	0.17	1,552,675

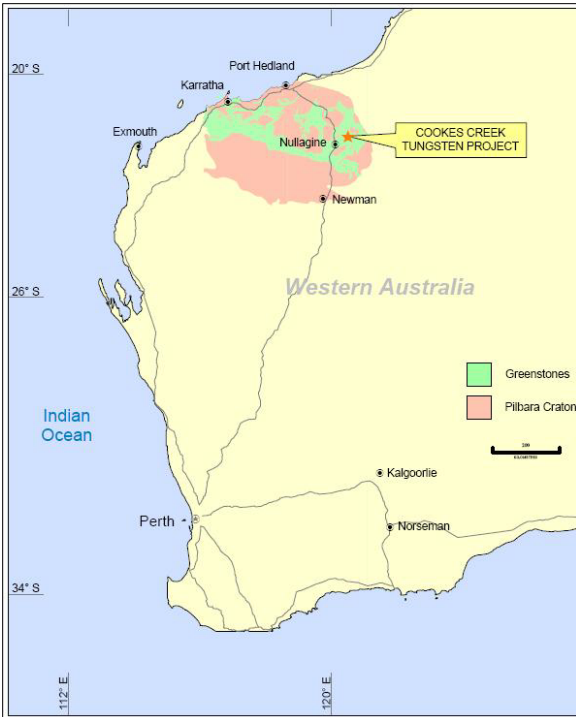
0.05% cut-off	Mt	% WO3	mtu
<b>Measured</b>	3.14	0.14	433,596
<b>Indicated</b>	2.98	0.12	373,000
<b>Inferred</b>	15.71	0.11	1,680,542
<b>Total</b>	21.83	0.11	2,488,734

The Mineral resource was estimated by Micromine Consulting Pty Ltd based on data supplied by Hazelwood. Micromine Consulting reviewed the QA/QC procedures provided in the report prepared by Hazelwood Resources and did not find concerns related to the quality of the data used for the resource estimation study. Resource estimation is based on the 3D digital interpretation of mineralised envelopes, followed by the geostatistical analysis and grade interpolation of the mineralised envelopes. The Resource is supported by 163 drillholes. A detailed Mineral Resource estimate has been released in a separate announcement to this media release.

The information in this report that relates to exploration results, mineral resources or ore reserves has been compiled by Mr Terence Butler-Blaxell MAust IMM who is a director of Hazelwood Resources Limited. Mr Butler-Blaxell has sufficient experience that is relevant to the style of mineralisation and type of deposit under consideration and to the activity which he has undertaken to qualify as a competent person as defined in the 2004 edition of the Australasian Code for the reporting of exploration results, mineral resources and ore reserves. Mr Butler-Blaxell consents to the inclusion in this report of the matters based on his information in the form and context in which it appears.

# Media Release

## Cookes Creek Tungsten Project



Hazelwood's Cookes Creek Tungsten Project is located in the East Pilbara of Western Australia, approximately 70 kilometres by road from the town of Nullagine.

The Cookes Creek Tungsten Project contains areas of historical tungsten production. The most intensively evaluated area in recent times is the Big Hill Tungsten Deposit.

Hazelwood has conducted focused drilling and metallurgical testwork programs at the Big Hill Tungsten Deposit. Only a fraction of the extensive mineralised sequence at Big Hill has been evaluated for Resources (Fig 1).

The Big Hill Tungsten Deposit occurs at surface, is shallow dipping and is metallurgically simple with an absence of deleterious impurity elements such as tin, arsenic, cadmium, molybdenum and base metals.

A simple and effective mineral processing flowsheet has been developed. Market samples of high purity scheelite concentrate have already been provided to several end-users who have expressed interest in the product.

The project concept is for a mining and processing operation with a production capacity of approximately 200,000 metric tonne units of tungsten concentrate per annum. Tungsten ore concentrates are currently around \$US130 per metric tonne unit and rising (source: Metal Pages).

The maiden Mineral Resource estimate is a major milestone in the project's path to development. Elements of a pre-feasibility study are being progressed, with completion expected by the second calendar half of 2009. A preliminary operating cost model is currently being developed. Recent successful X-ray sorting testwork has provided an opportunity to consider a bulk mining & processing operation that exploits the entire deposit.

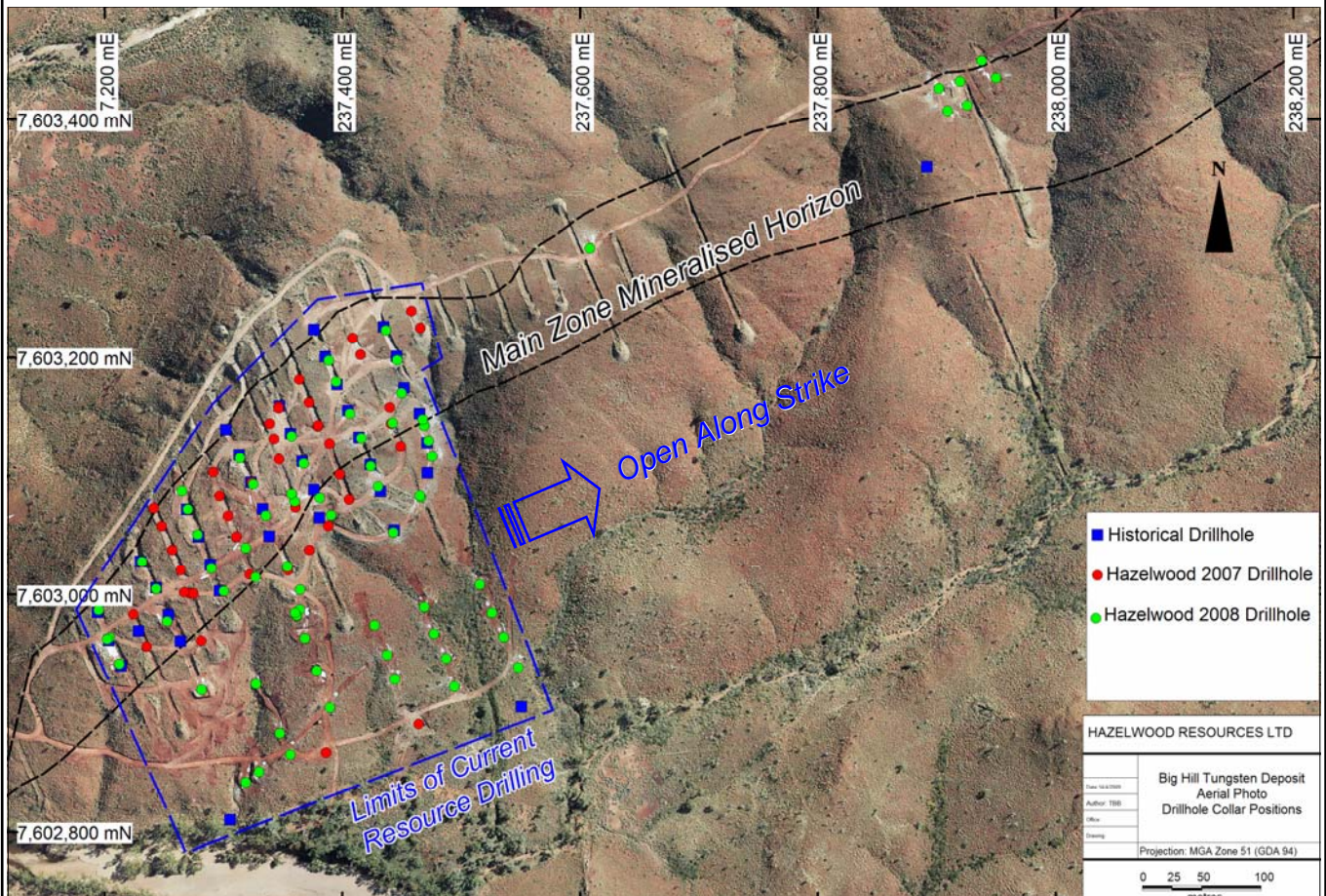


Figure 1. Aerial Photo of Big Hill Tungsten Deposit showing drillhole collars and extent of Resource Drilling

For further information contact Mark McAuliffe, Executive Chairman on (08) 9320 5216